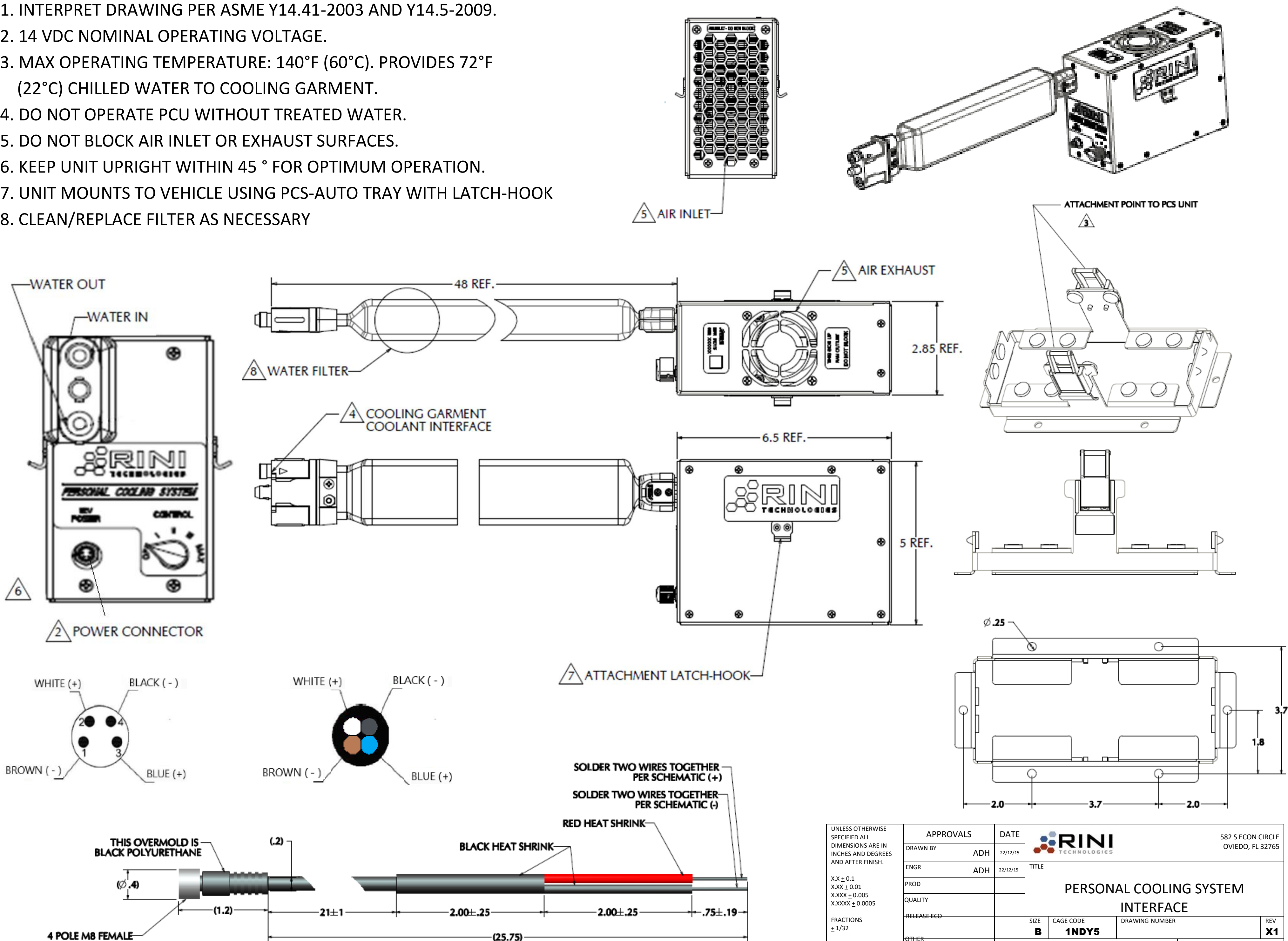


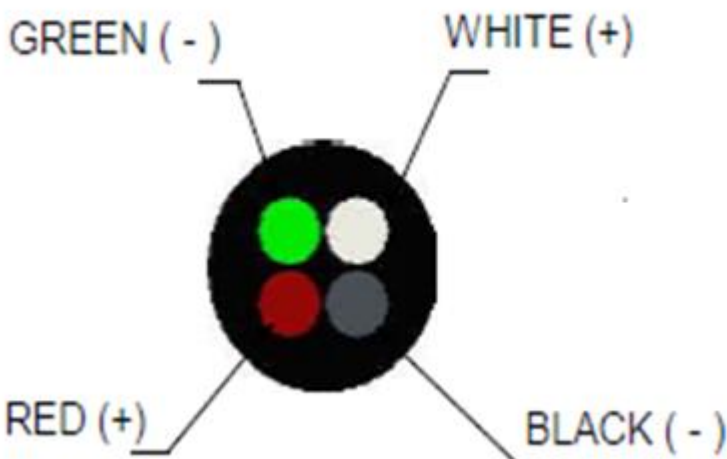
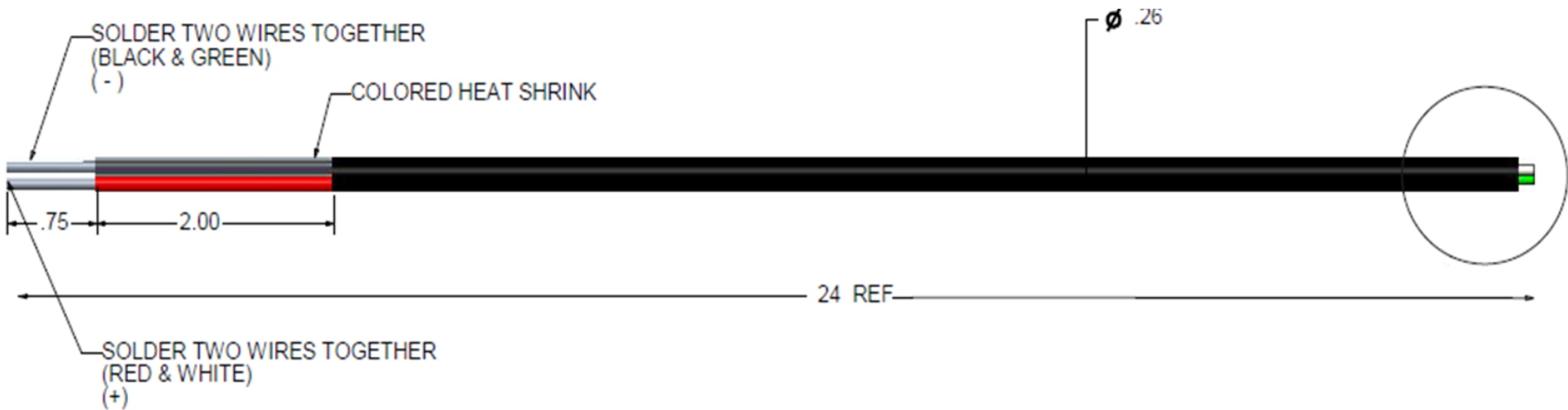
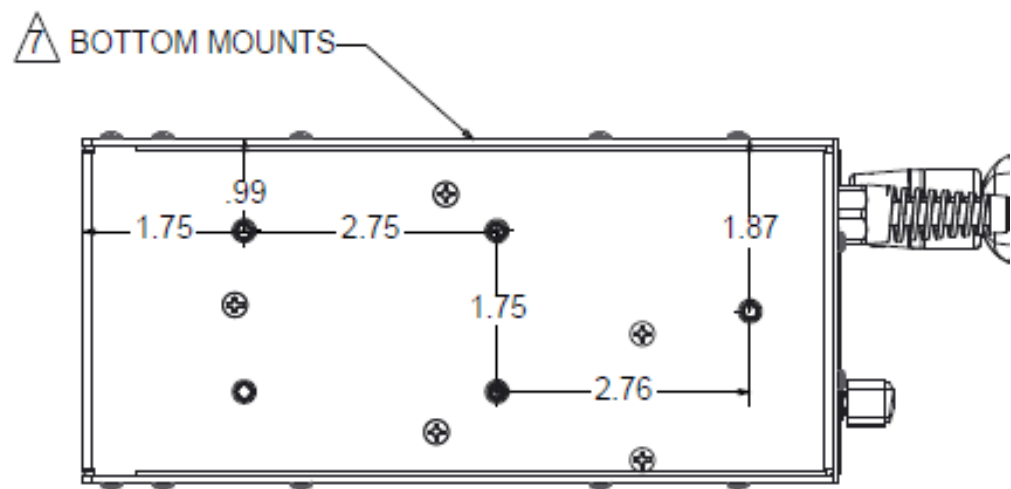
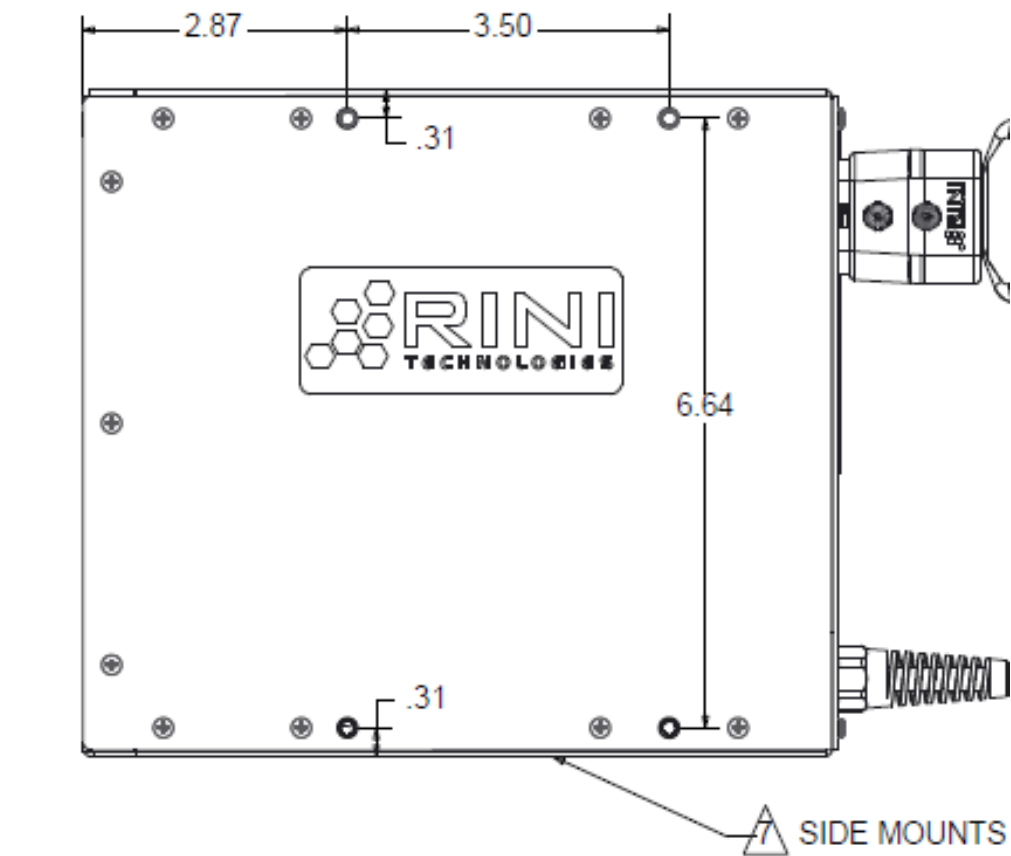
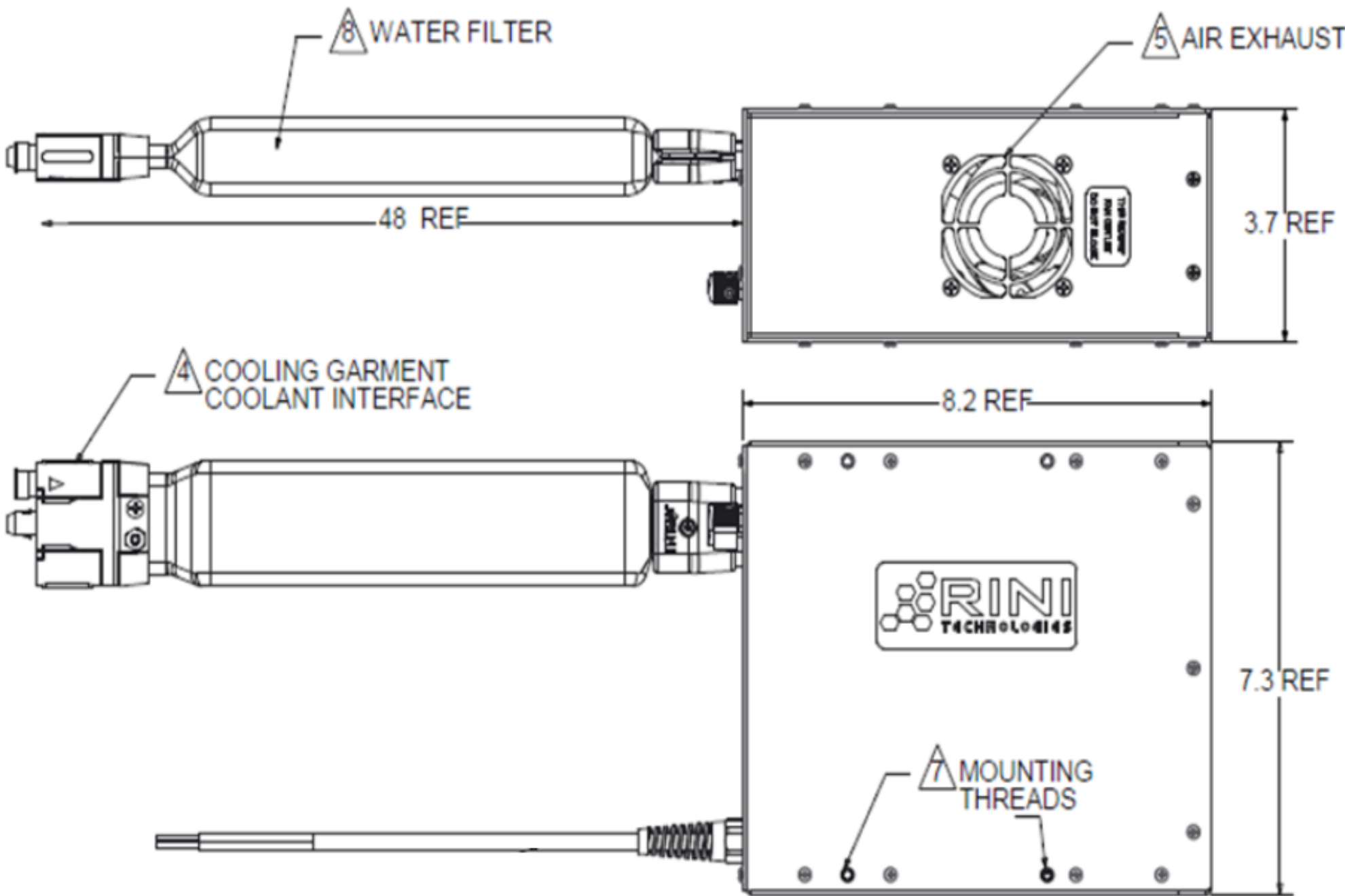
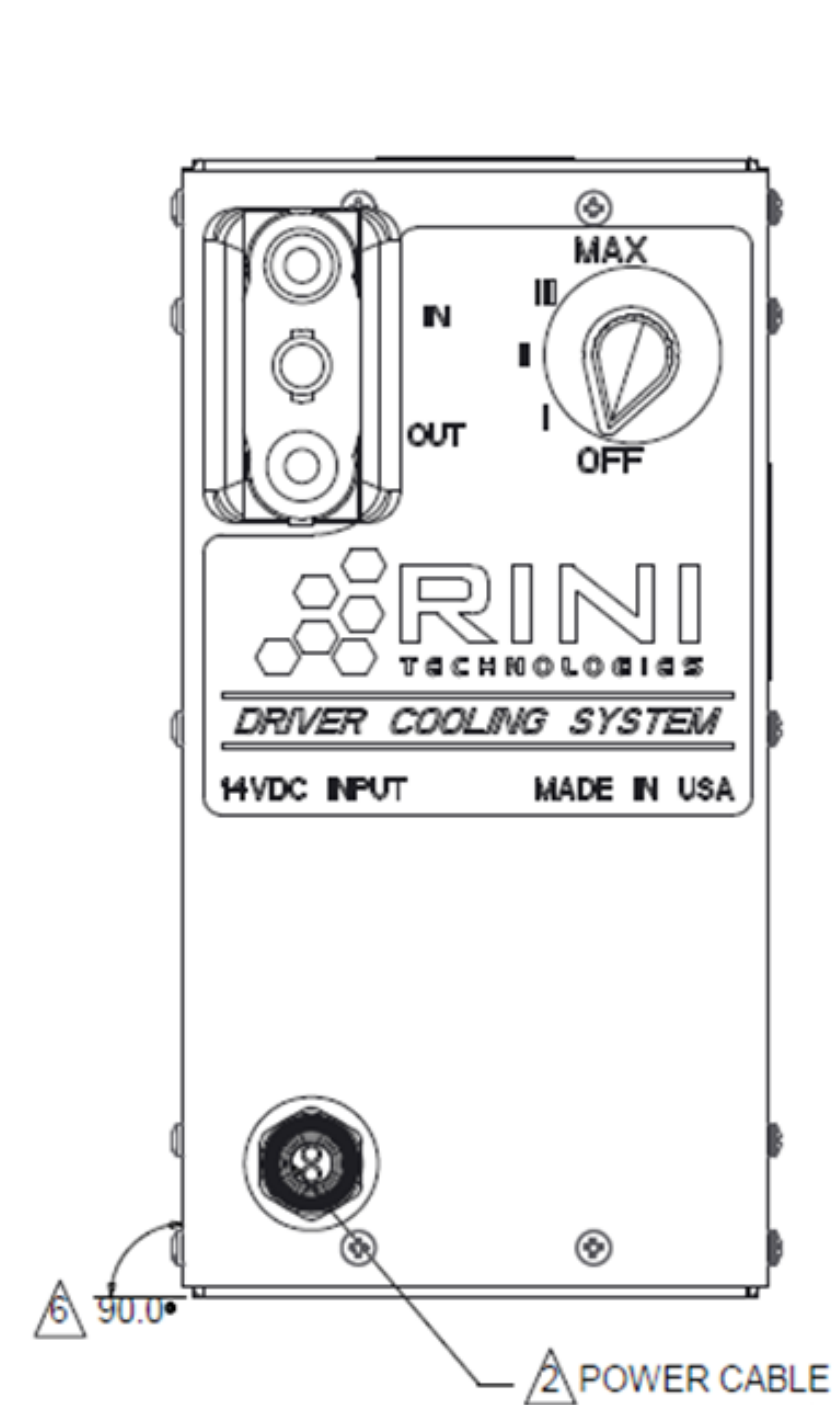
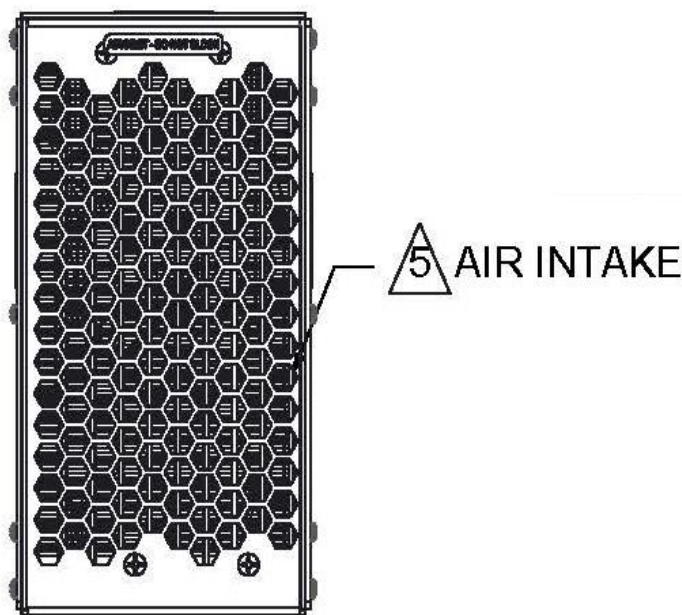
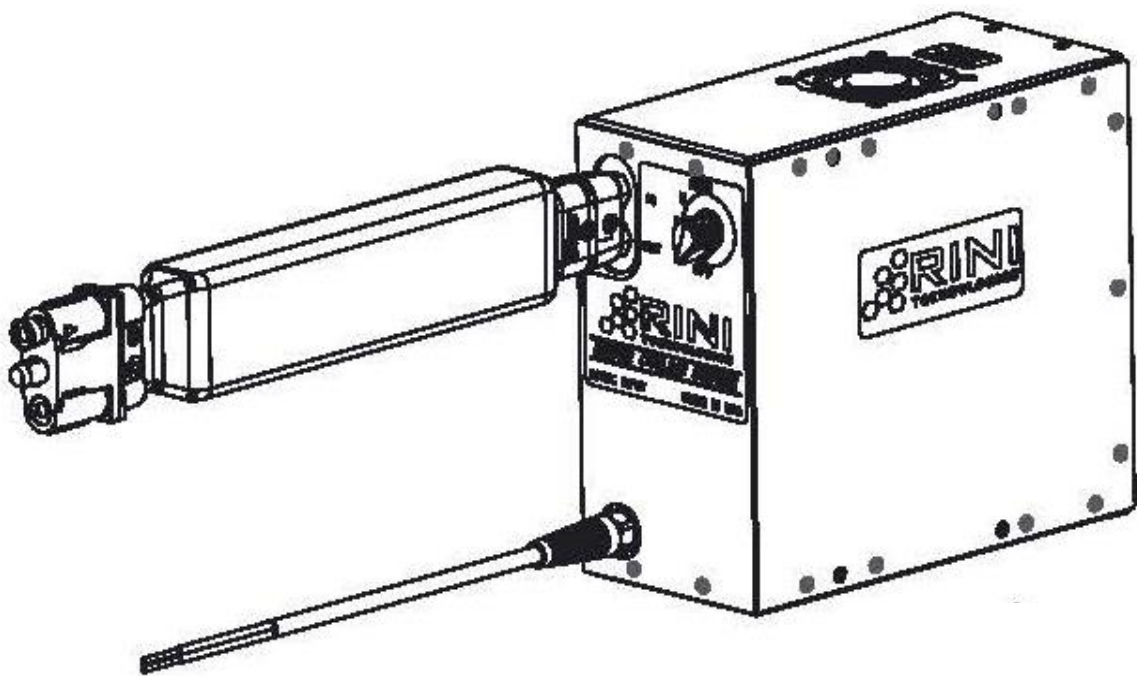
NOTES:


- 1. INTERPRET DRAWING PER ASME Y14.41-2003 AND Y14.5-2009.
- 2. 14 VDC NOMINAL OPERATING VOLTAGE.
- 3. MAX OPERATING TEMPERATURE: 140°F (60°C). PROVIDES 72°F (22°C) CHILLED WATER TO COOLING GARMENT.
- 4. DO NOT OPERATE PCU WITHOUT TREATED WATER.
- 5. DO NOT BLOCK AIR INLET OR EXHAUST SURFACES.
- 6. KEEP UNIT UPRIGHT WITHIN 45 ° FOR OPTIMUM OPERATION.
- 7. UNIT MOUNTS TO VEHICLE USING PCS-AUTO TRAY WITH LATCH-HOOK
- 8. CLEAN/REPLACE FILTER AS NECESSARY



NOTES:

- 1. INTERPRET DRAWING PER ASME Y14.41-2003 AND Y14.5-2009.
- 2. 14 VDC NOMINAL OPERATING VOLTAGE.
- 3. MAX OPERATING TEMPERATURE: 160° F (71°C).
- 4. DO NOT OPERATE DRCS WITHOUT TREATED WATER.
- 5. DO NOT BLOCK AIR INLET OR EXHAUST SURFACES.
- 6. KEEP UNIT UPRIGHT WITHIN 45 FOR OPTIMUM OPERATION.
- 7. UNIT MOUNTS TO VEHICLE, 6-32 UNC THREADS, 13 TOTAL, MAX THREAD DEPTH .75"
- 8. CLEAN/REPLACE FILTER AS NECESSARY



UNLESS OTHERWISE SPECIFIED ALL DIMENSIONS ARE IN INCHES AND DEGREES AND AFTER FINISH. X.X ± 0.1 X.XX ± 0.01 X.XXX ± 0.005 X.XXXX ± 0.0005 FRACTIONS ± 1/32	APPROVALS		DATE	 <div>582 S ECON CIRCLE OVIEDO, FL 32765</div>	
	DRAWN BY	ADH	22/12/15		
	ENGR	ADH	22/12/15	TITLE	
	PROD			DRIVER COOLING SYSTEM INTERFACE	
	QUALITY				
	RELEASE ECO				
OTHER				SCALE: NONE	SHEET 1 of 1
		SIZE B	CAGE CODE 1NDY5	DRAWING NUMBER	REV X1