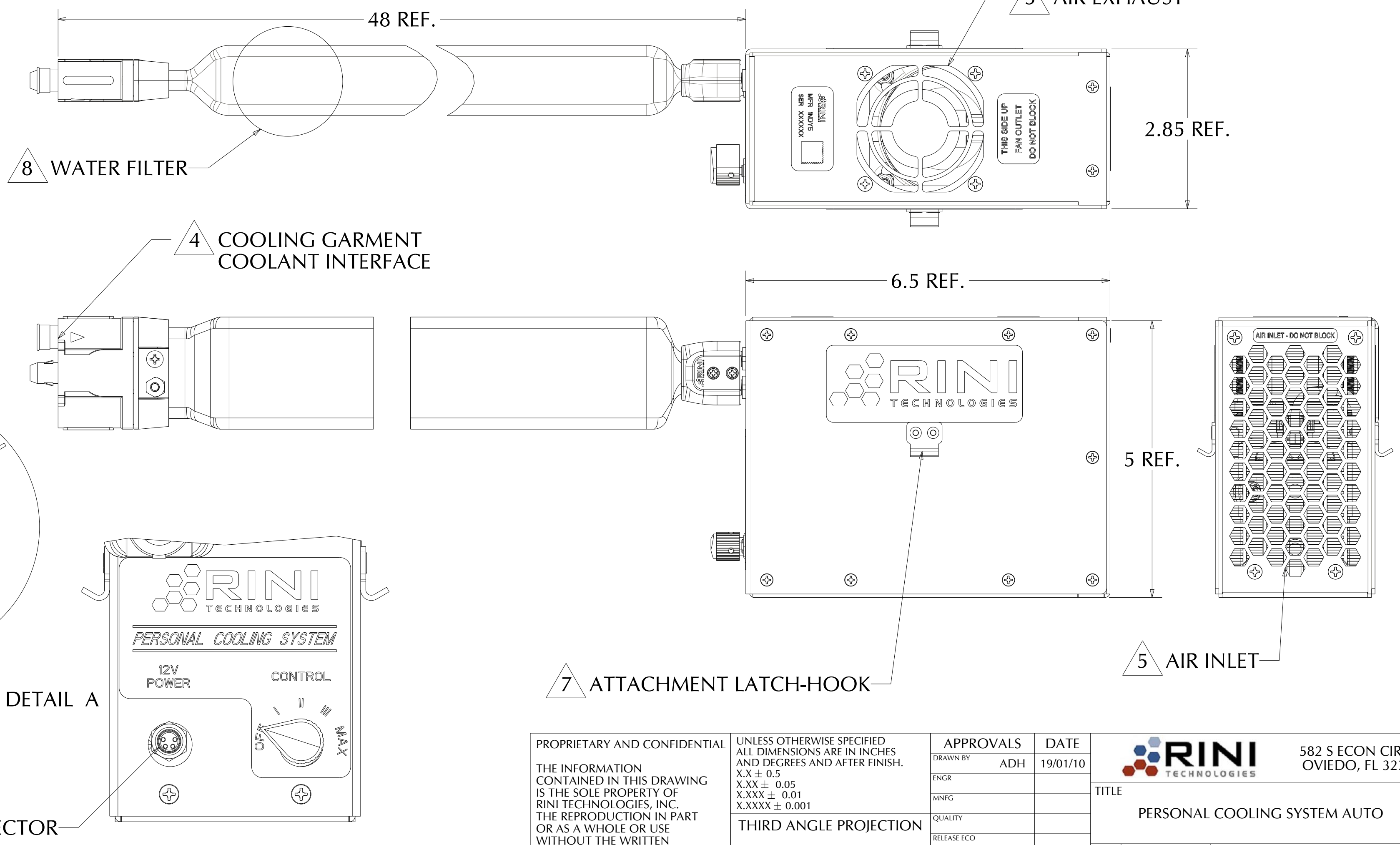
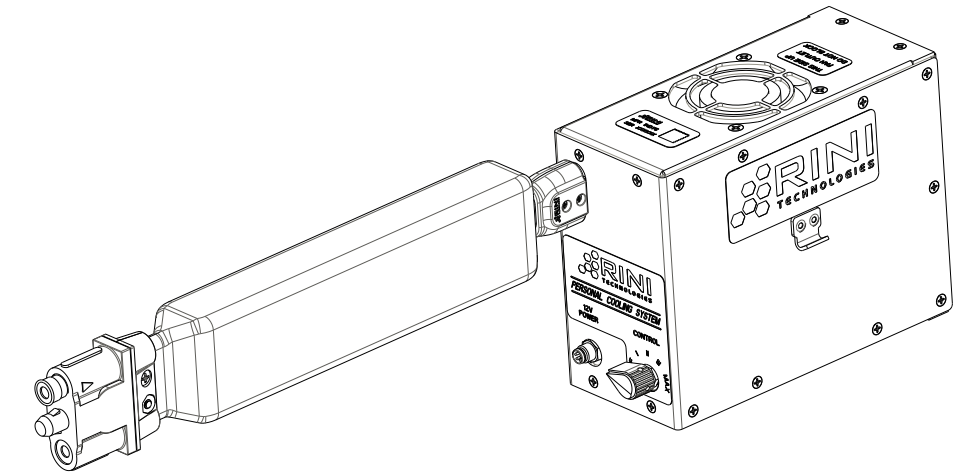


NOTES:

1. INTERPRET DRAWING PER ASME Y14.41-2003 AND Y14.5-2009.
2. 12 VDC NOMINAL OPERATING VOLTAGE.
3. MAX OPERATING TEMPERATURE: 140°F (60°C). PROVIDES 72°F (22°C) CHILLED WATER TO COOLING GARMENT.
4. DO NOT OPERATE PCU WITHOUT TREATED WATER.
5. DO NOT BLOCK AIR INLET OR EXHAUST SURFACES.
6. KEEP UNIT UPRIGHT WITHIN 45° FOR OPTIMUM OPERATION.
7. UNIT MOUNTS TO VEHICLE USING PCS-AUTO TRAY WITH LATCH-HOOK
8. CLEAN/REPLACE FILTER AS NECESSARY

REVISION HISTORY				
ZONE	REV	DESCRIPTION	DATE	APPROVED
	X1	PRELIMINARY RELEASE	19/01/10	ADH



PROPRIETARY AND CONFIDENTIAL
 THE INFORMATION CONTAINED IN THIS DRAWING IS THE SOLE PROPERTY OF RINI TECHNOLOGIES, INC. THE REPRODUCTION IN PART OR AS A WHOLE OR USE WITHOUT THE WRITTEN PERMISSION OF RINI TECHNOLOGIES, INC IS PROHIBITED.

UNLESS OTHERWISE SPECIFIED ALL DIMENSIONS ARE IN INCHES AND DEGREES AND AFTER FINISH.
 X.X ± 0.5
 X.XX ± 0.05
 X.XXX ± 0.01
 X.XXXX ± 0.001

THIRD ANGLE PROJECTION

APPROVALS	DATE
DRAWN BY: ADH	19/01/10
ENGR:	
MINFG:	
QUALITY:	
RELEASE ECO:	
DESIGN ACTIVITY:	
OTHER:	

		582 S ECON CIRCLE OVIEDO, FL 32765	
		TITLE PERSONAL COOLING SYSTEM AUTO	
SIZE C	CAGE CODE 1NDY5	DRAWING NUMBER 102535	REV X1
SCALE 1:2	SHEET 1 OF 1		